

INSPIRED CAPTURE

P 20⁺

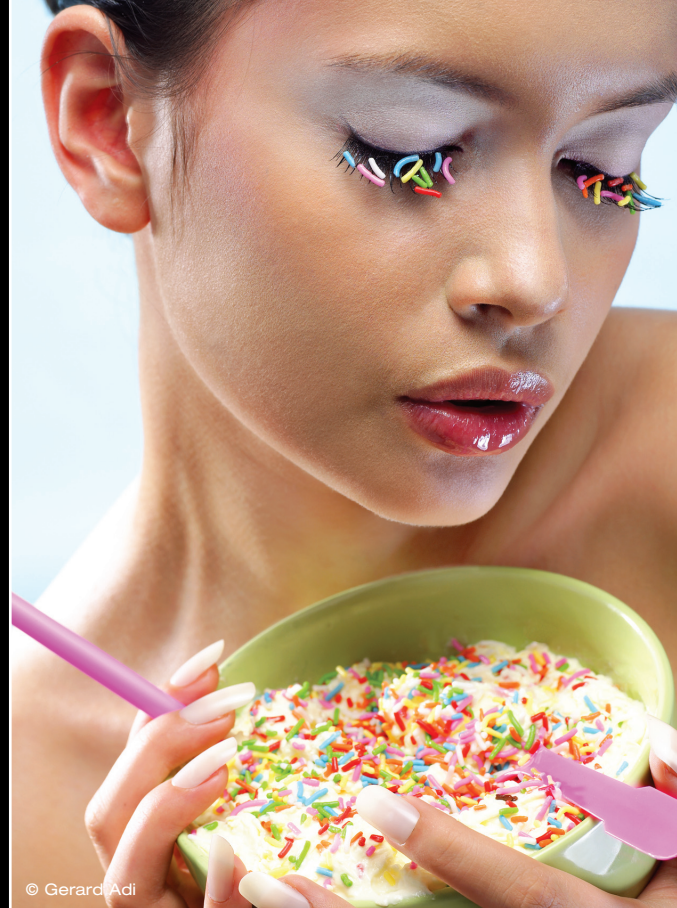
Setting the new benchmark

Offering 16-bit capture the P 20⁺ gives you medium format quality and high speed digital capture at an affordable price. The Phase One P 20⁺ camera system offers a square format sensor for a classic approach to capture. Frame images for vertical or horizontal crops with ease make this the ideal tool

for weddings, portraits and production catalogue photography. The 12 f-stop capture range combined with the advanced feature of Capture One software saves time and money in post-production.

PHASEONE

what the world's best photography is made of



© Gerard Adi

P 20⁺

- Naturally balanced colors and skin tones
- Flexible composition with no need for camera rotation
- Cost effective entry-level solution
- World leading image quality
- Unlimited burst lengths
- 1:1 aspect ratio square format sensor
- 16 mega pixels



SPECIFICATIONS:

Imaging technology

CCD:	Less than full frame CCD
Lens Factor:	1.4
Resolution:	16 mega pixels
Active pixels:	4080 x 4080 pixels
CCD size effective:	36.9 x 36.9 mm
Pixel size:	9 x 9 micron
Image ratio:	1:1
Microlens on CCD:	No
Antiblooming:	10 f-stops
Dynamic range:	12 f-stops

Storage files

Phase Ones IIQ RAW file format speeds up the image capture and file transfer. Increases the storage capacity by turning the full 16 bit image data into a compact RAW file format. The default IIQ RAW-large format is completely lossless.

IIQ small:	12 MB
IIQ large:	18 MB

Output files

Color depth:	16 bit per color
--------------	------------------

Image file formats:	TIFF-RGB, TIFF-CMYK, JPEG
Color management:	RGB, Embedded ICC profile, CMYK

Sensitivity

ISO:	50, 100, 200, 400, 800
------	------------------------

Camera system

Capture time:	1.15 sec./frame
Storage security:	Phase One 3S technology - Secure Storage System
Battery type:	7.2 V Lithium Ion 2500mAh
Battery lifetime:	4500 captures/4 hours
Exposure time:	1/10,000 sec. up to 1 hour with XPose+ technology
Live preview:	Yes
IR filter:	Mounted on CCD
Cooling system:	Passive cooling and sleeping architecture
Power up time:	Less than 2 sec.
Power:	8-33 V DC (from FireWire®)

LCD screen

Size:	2.2"
Resolution:	230,400 pixels
Viewing angle:	160°

P+ back mounts

Phase One/Mamiya:	Phase One 645 AF Mamiya 645AFD-series Via adaptor: Mamiya RZ67 Pro IID
-------------------	---

Phase One H101:	Hasselblad H1 and H2
-----------------	----------------------

Hasselblad V:	Hasselblad 555ELD, 533ELX, 503CW and 501CM Via adaptor: Mamiya RZ67 Pro II Mamiya RB67
---------------	---

Contax 645:	Contax 645 AFD
-------------	----------------

Wide angle & technical cameras

Possible via the Phase One Flexadaptor & third party adaptors.

Operating conditions

Temperature:	0° to 40°C (32° to 122°F)
Humidity:	15 to 80% RH (non-condensing)

Lighting

Supports all photographic lights:
Flash, tungsten, daylight, fluorescent, HMI

Computer minimum requirements

Mac:	G4, 500 MB RAM, FireWire® interface, Mac OS X 10.3.9 or later.
------	--

PC:	Pentium III, 500 MB RAM, IEEE 1394 interface, Windows XP/2000
-----	---

Software

Capture One DB or Capture One Pro

Certifications

CE

Phase One A/S

Roskildevej 39
DK-2000 Frederiksberg
Denmark
Tel.: +45 36 46 01 11
Fax: +45 36 46 02 22
Email: info@phaseone.dk

Phase One Inc. - USA

200 Broadhollow Road
(Suite 312)
Melville, NY 11747 - 0983
Tel.: +1 631 547 8900
Fax: +1 631 547 9898
Email: info@phaseone.com

Phase One Germany

Oskar-Jäger-Str. 160
D-50825 Köln - Germany
Tel.: +49 (0)221 54 02 26 - 0
Fax: +49 (0)221 45 02 26 - 22
Email: info@phaseone.de

www.phaseone.com

Phase One support: <http://support.phaseone.com>

dealer stamp

Phase One Asia

Qing Hai Lu, 138, 25B
Jing An District
Shanghai 200041
China
Tel.: +86 21 63842854
Fax: +86 21 55217747
Email: lzm@phaseone.com

Phase One Japan

#302,2-11-1 Nakano
Nakano-ku, Tokyo
Japan 164-0001
Tel.: +81 3 3229 0977
Fax: +81 3 3229 0987
Email: japan@phaseone.com

April 2008 #86706800/2500.

